



25 YEARS OF WILDLIFE HEALTH IN CANADA

CWHC ANNUAL REPORT SUMMARY

2016/2017

25 YEARS OF WILDLIFE HEALTH

From our origins as a collective of people helping to understand causes of wildlife death to a becoming steward of a national community of world-class wildlife health experts, the CWHC has helped us better understand how society affects wildlife health and how wildlife affect our well-being. The CWHC has become an international leader in developing tools, techniques, experts and agreements that allow Canadians to keep pace with the unprecedented social and environmental pressures affecting wildlife health.

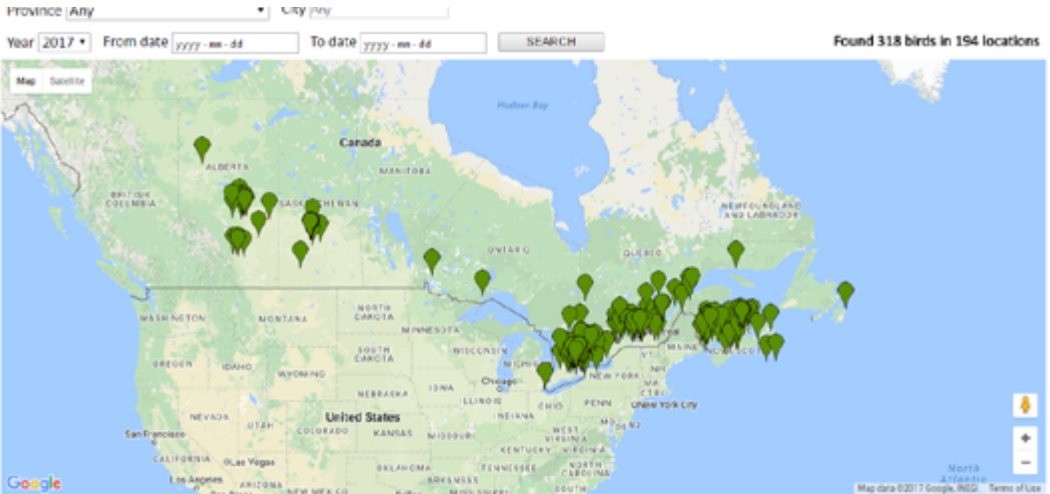
“ [The CWHC] provides us with expertise and experience in wildlife health so that Canada is ready to tackle challenges like climate change, emerging diseases, and pollution. The co-operative helps us to be better prepared and focused on preventing problems before they arise.”

as cited in Hansard May 12, 2017

DEBORAH SCHULTE MP
Chair of the Standing Committee on
Environment and Sustainable Development



HEALTH INTELLIGENCE



Wildlife Health Intelligence integrates processes, tools and people working together in order to turn wildlife health data into insights and actionable information, converting information into evidence and knowledge, and ultimately communicating findings, results, and key messages to all those who need them.

2016-2017 INNOVATIONS

The CWHC **Wildlife Health Intelligence Platform**: modernizing wildlife health information management

Wildlife Health Tracker: online tool to enhance wildlife health surveillance in Canada

Quarterly reports: online wildlife health information to identify priorities and communicate wildlife health issues.

2016-2017.cwhc-rscf.ca

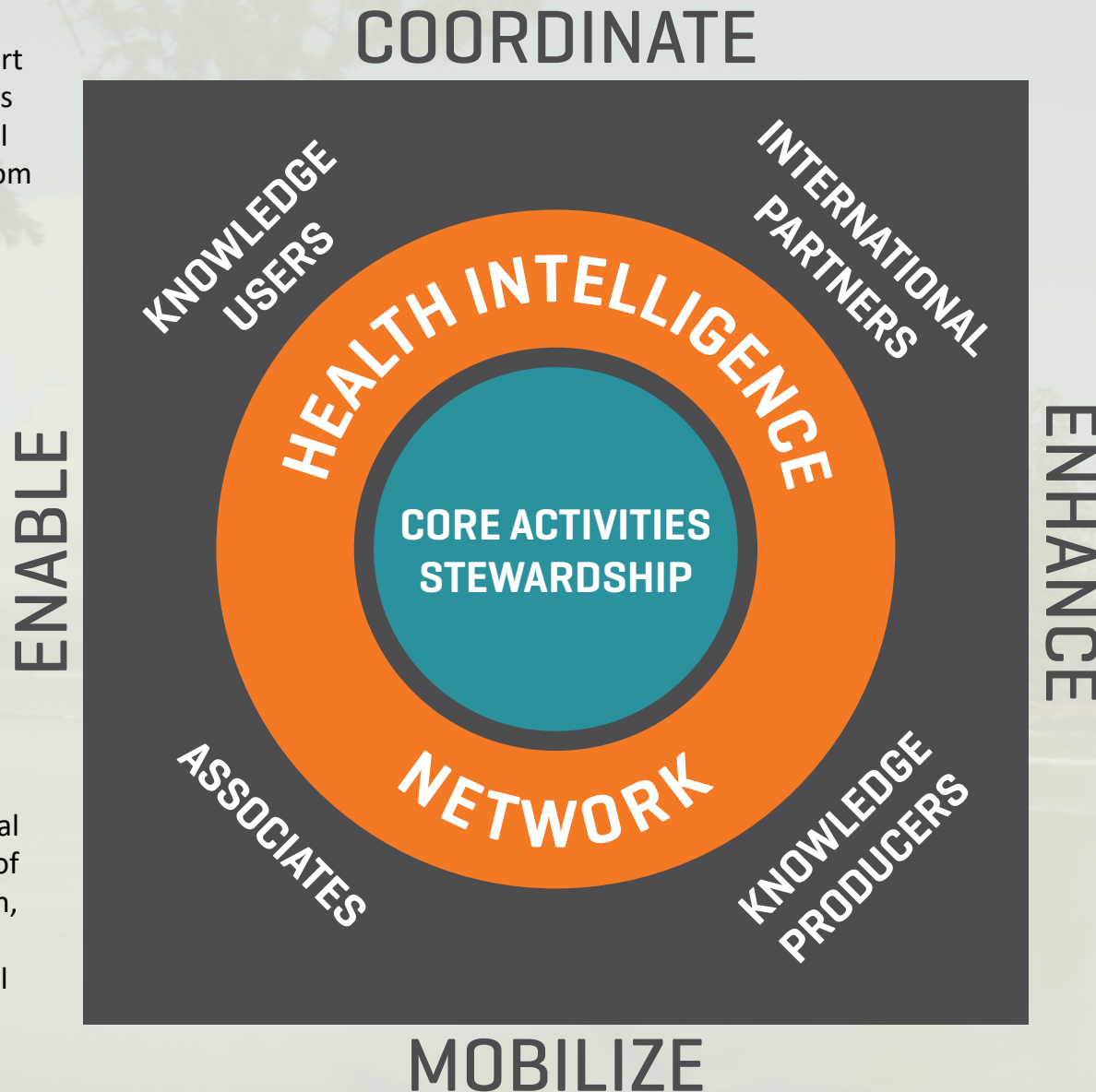
COMMUNITY OF PRACTICE

PROVINCES AND TERRITORIES

CWHC Regional centres support wildlife health programs across all of Canada. Regular financial contributions to our efforts from 12 provinces and territories provide 30% of our budget

FEDERAL AGENCIES

Federal ministries responsible for conservation, agriculture and public health are key partners in the CWHC national program. They contribute 40% to our budget



HOST INSTITUTIONS

Support in-kind for our regional centres from the Universities of Saskatchewan, Calgary, Guelph, Montreal and Prince Edward Island plus from the BC Animal Health Centre ensure a CWHC presence across Canada

ASSOCIATES AND AFFILIATES

Our associates program is expanding the expertise available to the CWHC beyond our core staff. By expanding our community of practice, the CWHC is better placed to see and respond to wildlife health events

INNOVATION

Leading in the development of tools and strategies to maximize effectiveness.

ANIMAL WELFARE

From seals to whales the CWHC is working with researchers and local communities to develop new techniques and scientific approaches to ensure animal welfare considerations are given priority when dealing with wildlife.

WORKING WITH COMMUNITY

Last year's activities included working with northern communities and hunters, identifying drivers of salmon health and working with industry groups to develop new information products for wild bird avian influenza surveillance. Other projects involved government agencies, international collaborations, industry groups, and highly experienced individuals.

DETECTION

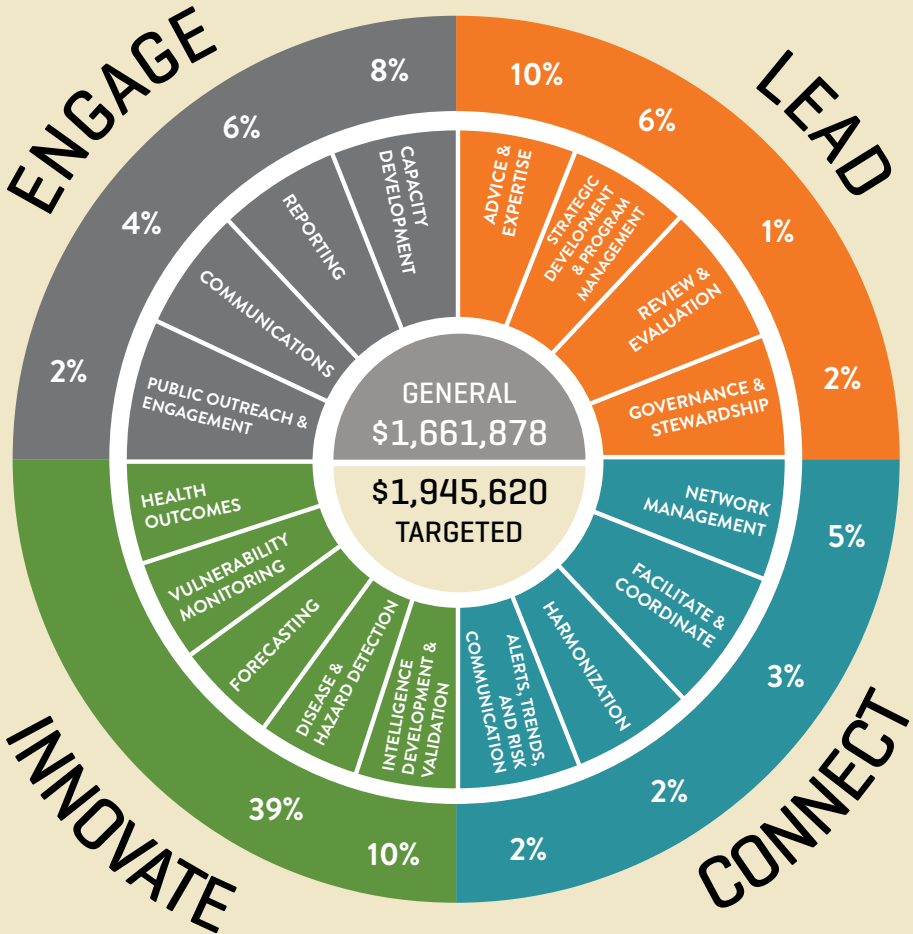
Development and use of new diagnostic tools to detect emerging threats e.g. PCR tests developed for snake fungal disease and salamander chytrid disease

POLICY AND GOVERNANCE

New strategies – a modernized national approach to wildlife health that emphasizes risk assessment and management and adaptable capacities within key areas of focus (health intelligence, stewardship, innovation and effective governance).

FINANCES

A cooperative approach providing more services and expertise than any one jurisdiction or partner could generate alone.



OVER 40
FUNDING PARTNERS



CREATING A WORLD THAT IS SAFE AND SUSTAINABLE FOR WILDLIFE AND SOCIETY



facebook.com/cwhcrsf



twitter.com/CWHCRCSF



instagram.com/CWHCRCSF



youtube.com/HealthyWildlife



blog.healthywildlife.com

CWHC National Office
Western College of Veterinary Medicine
52 Campus Drive
Saskatoon, SK
S7N 5B4

Courriel: national@cwhc-rcsf.ca

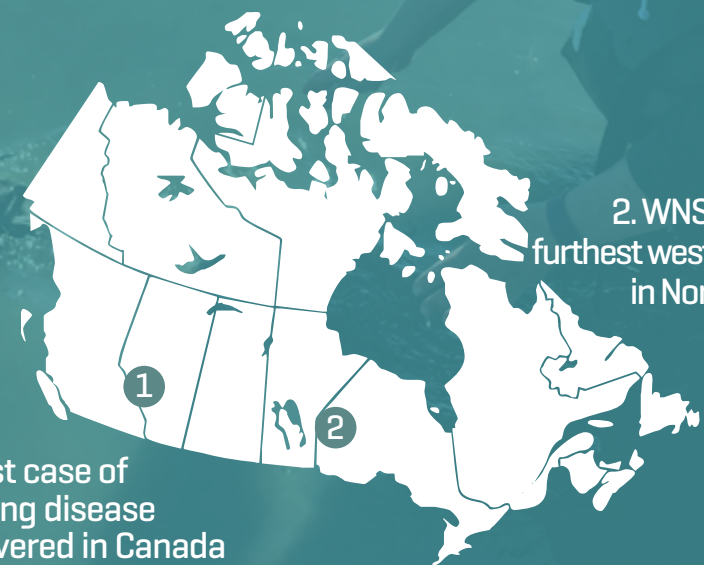
www.cwhc-rcsf.ca



LEAD



5,100 +
DIAGNOSTIC REPORTS
ON 280+ SPECIES



1. First case of Whirling disease discovered in Canada

2. WNS confirmed furthest west and north in North America

CONNECT



54 COMMITTEES
14 regional
24 national
16 international



162 AFFILIATES
66 staff
32 partner organizations
18 associates
46 graduate students

INNOVATE



15 STRATEGIC REPORTS
Including CWHC's framework for action on wildlife health



116 PRESENTATIONS
74 platform presentations
28 posters
14 invited lectures



68 PUBLICATIONS
3 book chapters
64 peer-reviewed articles
1 magazine article

ENGAGE



2,178 SOCIAL MEDIA FOLLOWERS
1,507 Facebook 524 Twitter 147 Instagram



54 blog posts
on blog.healthywildlife.ca



47,682 website page views
from 114 different countries

Strong, shared leadership to protect and promote wildlife health in Canada

Improve efficiency and effectiveness by working together

Forward looking tools and strategies to prepare us for today and tomorrow

Providing a shared vision for a national wildlife health network in Canada